



Benita Snyman
084 548 3941
benita.snyman@homeandhectare.com

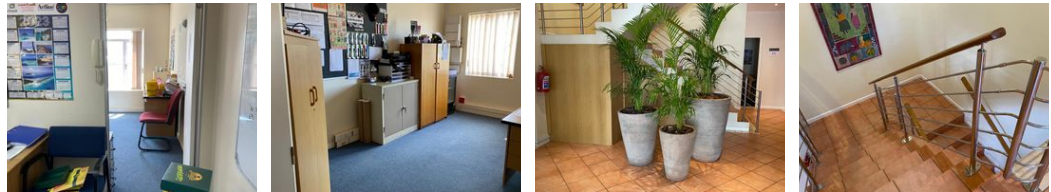
Contact Home and Hectare
Eastern Cape

041 5811744

43B - 6th Avenue
Walmer
Port Elizabeth
6070



Web Ref CL199



R75 per m²

Gross Monthly Rental R41,580 Excl. VAT

10 5

Well-Presented Office Space in Accessible Newton Park

If ease of access and presentation matter then this generous, unfurnished office space is sure to make a great impression. Priced at R90 ex VAT per m2 the property offers the following:

- 50m² ground floor office
- 330m² top floor offices
- 34.5m² outside room / boardroom
- 48m² double garage
- fully air-conditioned
- communal kitchen
- off street parking
- water tanks installed
- cleaning services available

*** Electricity excluded from rental and billed separately ***

Currently configured at 15 offices, extensive dry walling allows for reconfiguration to suit your exact requirements.

Newton Park continues to be a popular and in-demand business hub due to its central location, easy access to the N2 and Cape

Features

Zoning Commercial

Exterior

Covered Parking Bays 10
Open Parking Bays 5

Sizes

Floor Size 462m²

