



Benita Snyman
084 548 3941
benita.snyman@homeandhectare.com

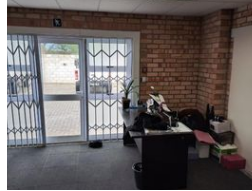
Contact Home and Hectare
Eastern Cape

041 5811744

43B - 6th Avenue
Walmer
Port Elizabeth
6070



Web Ref CL200



R75 per m²

Gross Monthly Rental R18,900 Excl. VAT

0 0

Well-Presented Office Space with warehouse in Accessible Newton Park

If ease of access matters, this unfurnished office space with warehousing is sure to tick all the boxes. Priced at R75 ex VAT per m2 the property offers the following:

- 72m2 office space - air-conditioned
- 180m2 warehousing
- kitchen
- 5 x off-street parking and street front parking

*** Electricity excluded from rental and billed separately, water & sewerage split proportionally***

Newton Park continues to be a popular and in-demand business hub due to its central location, easy access to the N2 and Cape

Features

Zoning Commercial

Sizes

Floor Size 180m²

