



Benita Snyman
084 548 3941
benita.snyman@homeandhectare.com



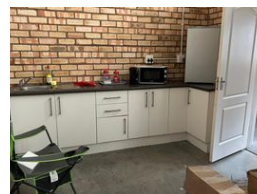
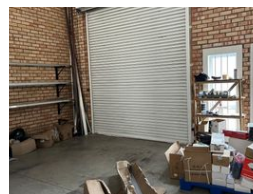
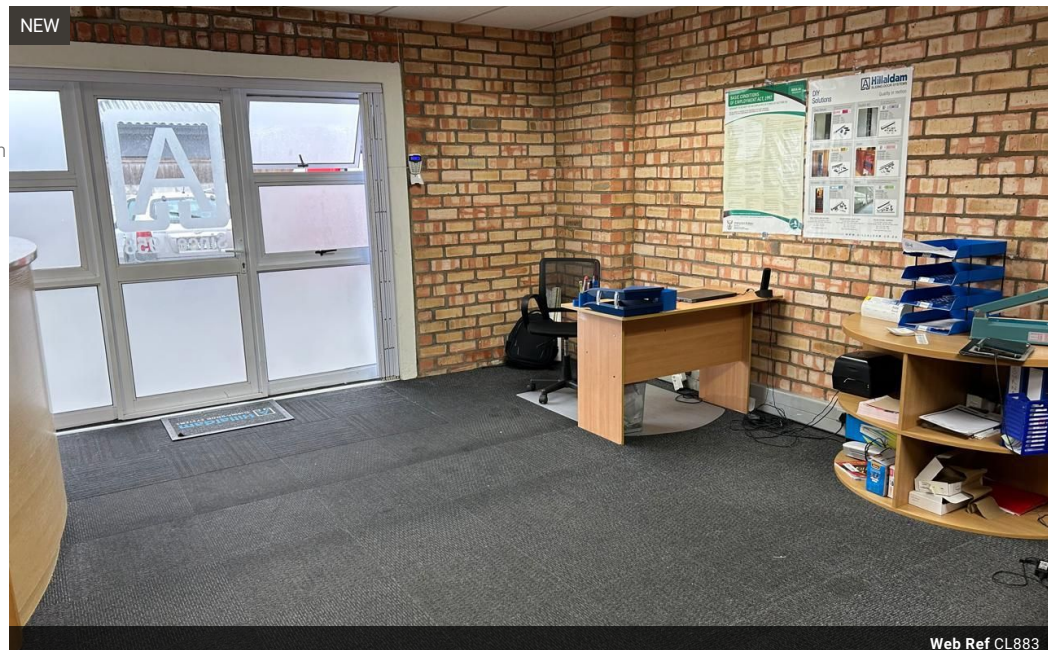
Wendy Baker
0837616170
wendy.baker@homeandhectare.com

Contact Home and Hectare
Eastern Cape

041 5811744

43B - 6th Avenue
Walmer
Port Elizabeth
6070

372m² Warehouse To Let in Newton Park



R85 per m²

Gross Monthly Rental R31,620 Excl. VAT

0 0

Commercial Property to Let in Newton Park

Located in the heart of Newton Park, one of Port Elizabeth's most sought-after business suburbs, this versatile commercial property offers an ideal solution for businesses in need of both storage and office space.

Including office space & storage for R85/m² (Excl. VAT)

Property Features:

- 300m² Storage Space: Spacious and functional area, perfect for stock storage and light industrial use.
- 72m² Office Space: Neatly carpeted and well-maintained, providing a comfortable workspace.
- Large Roll-Up Door: Facilitates easy access for loading and unloading of goods.
- Off-Street Parking: Convenient and secure parking available for staff and clients.
- Prime Location: Close to major transport routes, amenities, and commercial hubs.

Features

Zoning Commercial

Interior

Power 3 Phase Yes

Sizes

Floor Size 372m²

