



Albie Loubser
082 573 9902
albie.loubser@homeandhectare.com



Appie Maritz
082 825 3895

appie.maritz@homeandhectare.com

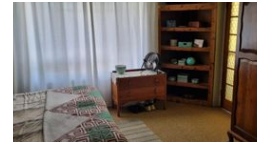
Contact Home and Hectare
Western Cape

041 581 1744

43b 6th Avenue
Walmer
Port Elizabeth



Web Ref RL4933



POA

5 3 3

SHEEP FARM

MERWEVILLE: 7258 ha farm

Extremely neat and well-kept farm with good infrastructure.

Good sweat veldt with high carrying capacity.

The farm consists mainly out of leegte veld, river veld with lots of Sweat thorn trees. a Small portion tends to be more to koppies that is fairly easily accessible

Good mixture of palatable Karoo shrubs and grass. The veld is well spared.

Divided into 15 camps each with at least one watering point.

All fences are well maintained with boundary fence either with stockproof fencing or equipped with electrical wire which is jackal proof.

All camps have access to sheep handling facilities.

Features

Pets Allowed		Yes			
Interior		Exterior		Sizes	
Bedrooms	5	Garages	3	Land Size	7,258Ha
Bathrooms	3	Dom. Accom.	3		
Recep. Rooms	2	Pool	No		

