

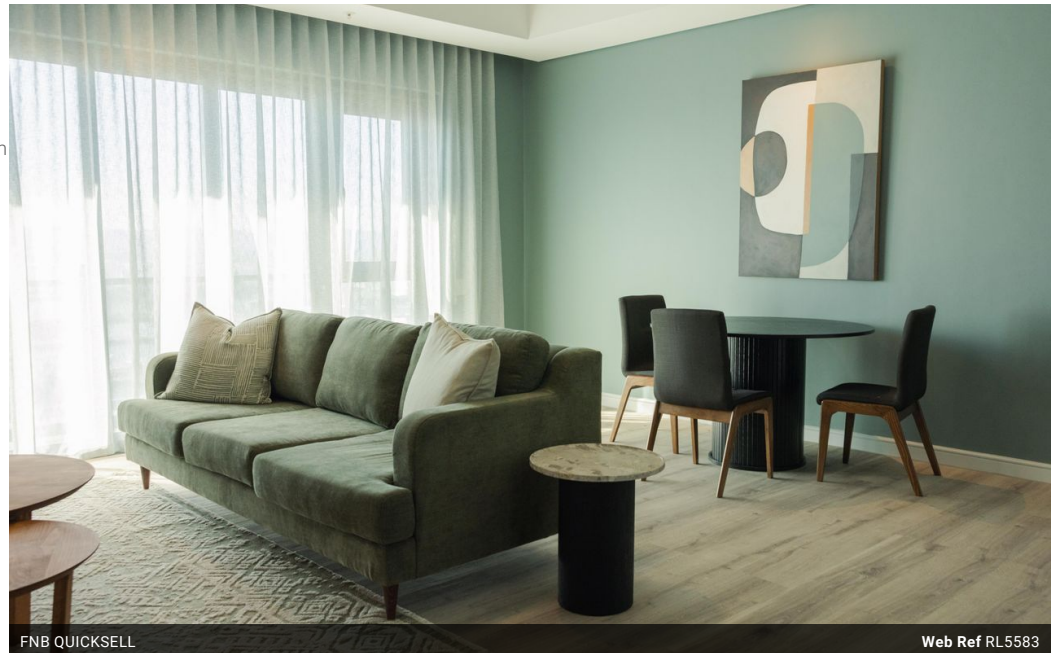


Shantal Cutting
078 128 8581
shantal.cutting@homeandhectare.com

Contact Home and Hectare
Western Cape

041 581 1744

43b 6th Avenue
Walmer
Port Elizabeth



FNB QUICKSELL

Web Ref RL5583



R6,995,000

Monthly Bond Repayment R72,201.58
Calculated over 20 years at 11% with no deposit.

Transfer Costs R633,216.00 **Bond Costs** R70,535.00
These calculations are only a guide. Please ask your conveyancer for exact calculations.

2 2

Monthly Levy R4,800 **Monthly Rates** R3,052

Top Floor Views - Where Modern Elegance and Eco-Friendly Living Come Together.

Experience the epitome of modern living in this exquisite top-floor apartment, where luxury meets sustainability in Cape Town's vibrant Foreshore district. This newly constructed residence offers breathtaking views of the bustling harbour and the endless horizon beyond, best enjoyed from your expansive, full-length balcony.

Designed with both style and comfort in mind, the apartment boasts two generously sized bedrooms, each with its own en-suite bathroom, alongside a seamless open-plan living area. The sophisticated kitchen, dining, and lounge spaces are perfect for both entertaining and everyday living. A discreetly placed laundry area adds to the apartment's functionality without compromising its sleek design.

Every detail has been considered, from the imported double-glazed windows that ensure peace and temperature...

Features

Interior		Exterior		Sizes	
Bedrooms	2	Carports / Parkings	2	Floor Size	86m ²
Bathrooms	2	Security	Yes		
Kitchens	1	Pool	Yes		
Recep. Rooms	1.5	Views	Yes		
Furnished	No				

Extras

Balcony View of Landmark Built-in Wardrobes Covered Parking Lobby in Building Security
Shared Pool View of Water Available Furnished Open Plan Air Conditioner Built-in Kitchen App

