



**Appie Maritz**  
082 825 3895  
appie.maritz@homeandhectare.com



**Albie Loubser**  
082 573 9902  
albie.loubser@homeandhectare.com

Contact Home and Hectare  
Western Cape

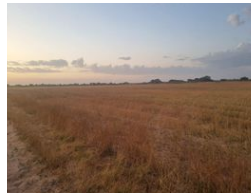
041 581 1744

43b 6th Avenue  
Walmer  
Port Elizabeth

FEATURED



Web Ref RL5751



**R9,995,000**

**Monthly Bond Repayment** R103,167.23  
Calculated over 20 years at 11% with no deposit.

**Transfer Costs** R980,126.00 **Bond Costs** R84,785.00  
These calculations are only a guide. Please ask your conveyancer for exact calculations.

0 0

Hopefield -390 ha farm with endless possibilities

Price Reduced

Discover the potential of this expansive farm, ideal for both agricultural pursuits and tourism.

- Agricultural Use:**
- 250 hectares suitable for livestock and wheat production
  - 60 hectares with potential for rooibos tea cultivation
  - Equipped with one borehole for water supply

- Accommodation:**
- A comfortable three-bedroom house
  - Three houses and a granny flat that can accommodate 50 people

- Entertainment Features:**
- An entertainment area perfect for weekend getaways
  - Sought-after 4x4 route (18 km) for adventure seekers
  - Motorbike route available

Features

<b>Pets Allowed</b>	Yes		
<b>Exterior</b>		<b>Sizes</b>	
Pool	No	Land Size	390Ha

