



Gail Botha
0823377454
gail.botha@homeandhectare.com



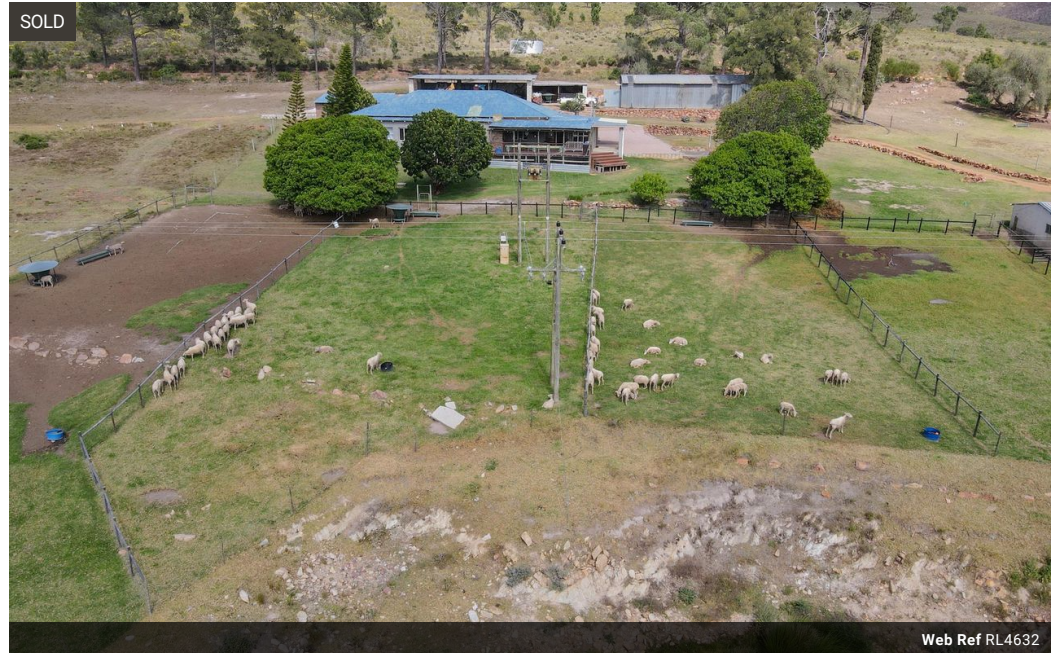
Renier Zietsman
0824915182

renier.zietsman@bkb.co.za

Contact Home and Hectare
Eastern Cape

041 5811744

43B - 6th Avenue
Walmer
Port Elizabeth
6070



Web Ref RL4632



R8,450,000

4 3.5 2

Monthly Bond Repayment R87,219.92
Calculated over 20 years at 11% with no deposit.

Transfer Costs R804,714.00 **Bond Costs** R80,035.00
These calculations are only a guide. Please ask your conveyancer for exact calculations.

Farm For Sale in Humansdorp Rural Area

Beautifully situated between the mountains and plains, this farm is approximately 30km from Humansdorp. Currently, it is home to around 900 Merino ewes, and the farm offers the following features:

- 613 hectares of land
- 2 Agrico Pivots
- 2 Permanent irrigation systems
- 8 Kikuyu Lamb Camps with Lamb pens
- Spring-fed Dam
- Borehole (22,000 L/h)
- 25 hectares of irrigated lands
- 55 hectares of non-cultivated dry lands
- 23 Camps
- 2 Dams supplying 24 water troughs
- All fences were rebuilt 5 years ago
- Electric fences around the Pivots
- 2 Sheep handling facilities
- 1 Field Shed

Features

Pets Allowed Yes

Interior

Bedrooms 4
Bathrooms 3.5
Kitchens 1
Recep. Rooms 3
Studies 1
Furnished No

Exterior

Garages 2
Carports / Parkings 2
Security Yes
Pool No
Views Yes

Extras

View of Landmark Built-in Wardrobes View of Water Borehole Built In Braai Fireplace Laundry
Patio Satellite Dish Veranda Water Tanks

