



Gerrit van Heerden
0836587474
gerrit.vanheerden@homeandhectare.com

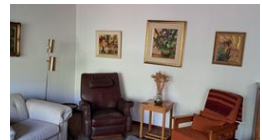
Contact Home and Hectare
Western Cape

041 581 1744

43b 6th Avenue
Walmer
Port Elizabeth



Web Ref RL5817



R6,950,000

Monthly Bond Repayment R71,737.09
Calculated over 20 years at 11% with no deposit.

Transfer Costs R628,266.00 **Bond Costs** R70,535.00
These calculations are only a guide. Please ask your conveyancer for exact calculations.

🛏 3 🚿 2 🚗 4

SMALL HOLDING FOR SALE

This 13,6 ha property occupies an attractive rural position in the Tierfontein area outside Malmesbury towards Cape Town. It sits in the heart of tranquil countryside and is slightly sloped with views across the picturesque landscape.

Farming activities consist of the production of wine grapes and tomatoes, all under irrigation.

There are 4 ha Shiraz (planted 2000/01) and 2 ha Mourvedre (planted 2002) for which each cultivar delivers a yield of approximately 15 tons of grapes per annum. Grapes are purchased by 2 prestigious wine brand entities who pay above average prices for this property's high quality.

Tomatoes are produced in 18 tunnels (covering 4 000 square meters) and deliver a total harvest of 60 to 70 tons from 2 harvesting periods per year.

Water for domestic use and irrigation comes from 2 boreholes...

Features

Pets Allowed	Yes		
Interior		Exterior	Sizes
Bedrooms	3	Garages	Land Size
Bathrooms	2	Carports / Parkings	13Ha
Recep. Rooms	2	Pool	
Studies	1		

