



Shantal Cutting
078 128 8581
shantal.cutting@homeandhectare.com

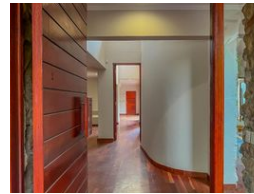
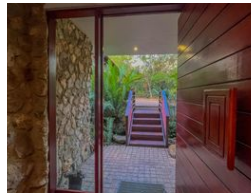
Contact Home and Hectare
Gauteng

041 5811744

Kyalami Agricultural Holdings
Gauteng



Web Ref RL5336



R10,700,000

Monthly Bond Repayment R110,444.16
Calculated over 20 years at 11% with no deposit.

Transfer Costs R1,063,827.00 **Bond Costs** R89,535.00

These calculations are only a guide. Please ask your conveyancer for exact calculations.

6 6.5 5

Monthly Levy R3,300 **Monthly Rates** R2,900

6 Bedrooms of which 5 is En-suite - Serene Intaba Estate

This property is a spacious and private family home nestled within a serene estate boasting breathtaking views of the Magaliesburg mountains. With five en-suite bedrooms, the home is designed to maximize natural light and features exquisite handcrafted wooden finishes throughout.

Equipped with sustainable features, the home operates autonomously with solar power and filtered borehole water. The meticulously landscaped indigenous garden enhances tranquility, featuring two koi ponds with waterfalls and a heated rock pool surrounded by lush greenery.

The interior layout is designed for both relaxation and entertainment, offering multiple living spaces including a reception room, formal lounge with a fireplace and built-in bar, dining room, and a private play/entertainment room. A spacious covered patio extends the living...

Features

Interior		Exterior		Sizes	
Bedrooms	6	Garages	5	Floor Size	1,000m ²
Bathrooms	6.5	Dom. Accom.	1	Land Size	4,246m ²
Kitchens	1	Pool	Yes		
Recep. Rooms	5				
Studies	1				

