

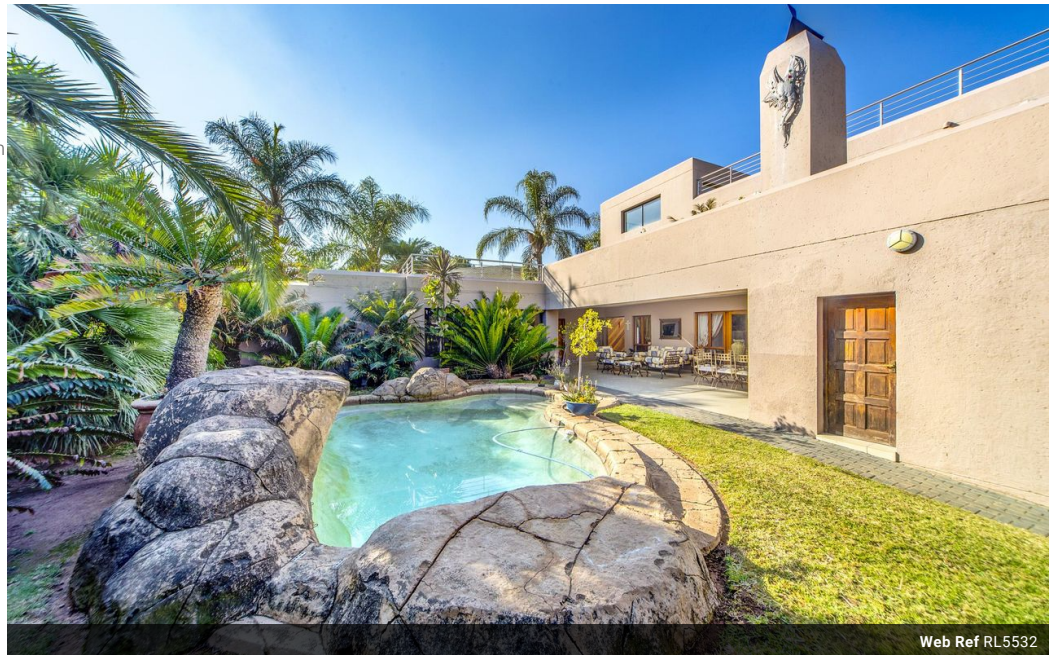


**Shantal Cutting**  
078 128 8581  
shantal.cutting@homeandhectare.com

Contact Home and Hectare  
Gauteng

041 5811744

Kyalami Agricultural Holdings  
Gauteng



Web Ref RL5532



**R6,499,000**

**Monthly Bond Repayment** R67,081.92  
Calculated over 20 years at 11% with no deposit.

**Transfer Costs** R578,656.00    **Bond Costs** R70,535.00  
These calculations are only a guide. Please ask your conveyancer for exact calculations.

**Monthly Rates** R3,470

5    4    2

**Luxurious 5-Bedroom House in an Estate with Spectacular Views and Recreation Amenities**

This property is located in a highly secure and desirable estate, offering a spacious 5-bedroom home suitable for families of any size. The house features 5 bedrooms, with 3 of them having their own bathrooms (en-suite). There are two bedrooms downstairs and three upstairs.

Upstairs, there's an open balcony where you can enjoy views of Johannesburg, soak up the winter sun, or watch the sunset. Additionally, there's a cottage at the back of the house which can accommodate a housekeeper or serve as extra bedrooms.

The estate itself is meticulously maintained, providing a peaceful environment with quiet streets ideal for walks. Several parks within the estate offer opportunities for picnics and enjoying natural surroundings. For recreation and fitness, residents have access to amenities such as tennis courts, paddle courts,...

**Features**

<b>Pets Allowed</b>	Yes			
<b>Interior</b>		<b>Exterior</b>		<b>Sizes</b>
Bedrooms	5	Garages	2	Land Size
Bathrooms	4	Pool	Yes	1,001m <sup>2</sup>
Kitchens	1			
Recep. Rooms	3			
Studies	1			

