



**Cynthia Arkeldien**  
0734547913  
cynthia.arkeldien@homeandhectare.com

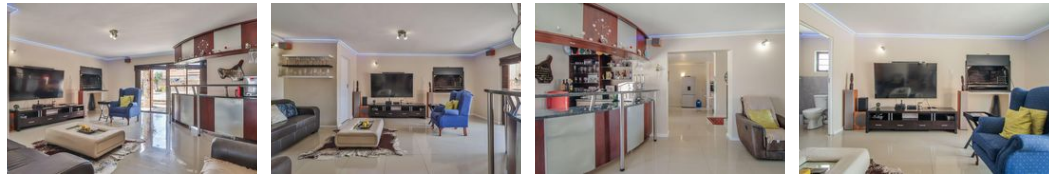
Contact Home and Hectare  
Eastern Cape

041 5811744

43B - 6th Avenue  
Walmer  
Port Elizabeth  
6070



Web Ref RL5759



**R1,900,000**

**Monthly Bond Repayment** R19,611.58  
Calculated over 20 years at 11% with no deposit.

**Transfer Costs** R69,206.00    **Bond Costs** R32,760.00

These calculations are only a guide. Please ask your conveyancer for exact calculations.

**Monthly Rates** R1,350

3    4    2

### The Ultimate Entertainer's Haven and Family Retreat

This stunning two-story home, thoughtfully designed for connection, celebration, and comfort. The spacious lounge, featuring a chic granite-topped bar and a built-in braai doubling as a fireplace, sets the tone for cozy evenings and lively gatherings.

The open-plan kitchen flows seamlessly into the living areas, with sliding doors leading to a backyard oasis complete with a sparkling pool. Upstairs, the main bedroom offers a boutique-style ensuite and private balcony overlooking the pool, while the second bedroom also features an ensuite, and the third provides flexible space for work or play.

Outside, the entertainer's dream Lapa includes a built-in braai, guest loo, jacuzzi, and pool, perfect for unforgettable summer nights. With extras like 10 solar panels and an inverter, CCTV, electric fencing, and two water tanks,...

### Features

Pets Allowed		Yes			
Interior		Exterior		Sizes	
Bedrooms	3	Garages	2	Floor Size	282m <sup>2</sup>
Bathrooms	4	Carports / Parkings	3	Land Size	700m <sup>2</sup>
Recep. Rooms	2	Pool	Yes		

