

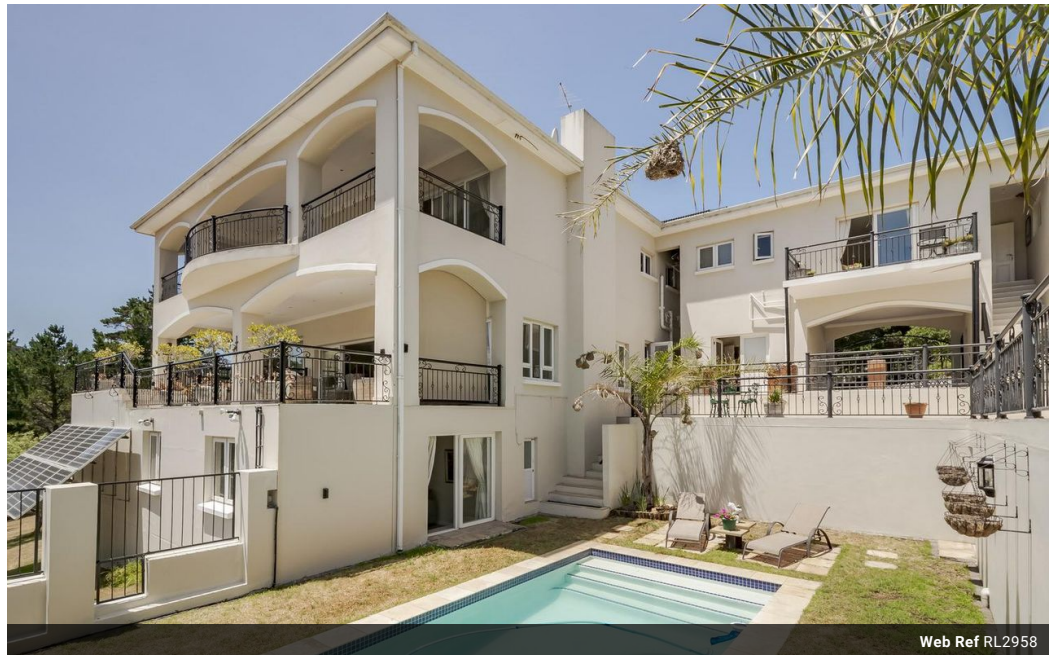


Heidi Procter
0825770770
27825770770@vodamail.co.za

Contact Home and Hectare
Eastern Cape

041 5811744

43B - 6th Avenue
Walmer
Port Elizabeth
6070



Web Ref RL2958



R6,490,000

🛏 6 🚿 7 🚗 2

Monthly Bond Repayment R66,989.03

Calculated over 20 years at 11% with no deposit.

Transfer Costs R577,666.00 **Bond Costs** R70,535.00

These calculations are only a guide. Please ask your conveyancer for exact calculations.

Monthly Levy R1,020 **Monthly Rates** R6,056

Elegance Personified

Gorgeous luxury estate home comprising of 5 extra-large, en-suite bedrooms and gracious living rooms (separate lounge and TV rooms with fireplaces).

Absolutely stunning views. Kitchen with pantry and scullery/laundry. Extra apartment with bedroom, bathroom and kitchenette. Lovely staff accommodation. Salt water swimming pool. Solar Voltaic energy.

In addition, the property offers 2 separate plots available for sale at R720 000 each and measuring 1001sqm and 1200sqm respectively.

Features

Pets Allowed Yes

Interior

Bedrooms 6
Bathrooms 7
Kitchens 2
Recep. Rooms 3
Studies 1

Exterior

Garages 2
Carports / Parkings 1
Dom. Accom. 1
Pool Yes

Sizes

Floor Size 959m²

