



**Ronell Human**  
0833672173  
ronell.human@bkb.co.za

Contact Home and Hectare  
Eastern Cape

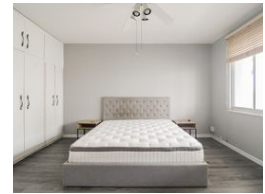
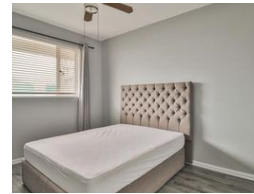
041 5811744

43B - 6th Avenue  
Walmer  
Port Elizabeth  
6070



SOLE MANDATE

Web Ref RL5290



**R1,079,000**

**Monthly Bond Repayment** R11,137.31  
Calculated over 20 years at 11% with no deposit.

**Transfer Costs** R32,749.00    **Bond Costs** R25,220.00

These calculations are only a guide. Please ask your conveyancer for exact calculations.

**Monthly Levy** R975    **Special Levy** R334



A well maintained and spacious apartment!

5 Minute Walk to the Beach!

The apartment has wooden flooring throughout. It consists of 2 bedrooms with BIC, 2 bathrooms, a huge living room and dining room. The living area extends to an enclosed sunroom.

Separate kitchen with built in stove. The kitchen also has space for washing machine and tumble dryer.

The property is well-kept with elevator to allow for easy access to the apartment. The apartment also has an allocated undercover parking area.

Don't forget to watch the video.

Every effort has been made to make sure the content of this advert is correct, however, no responsibility will be taken for any errors or omissions it may have.

**Features**

**Interior**

Bedrooms	2
Bathrooms	2
Kitchens	1
Recep. Rooms	2

**Exterior**

Carports / Parkings	1
Pool	No

**Sizes**

Floor Size	105m <sup>2</sup>
Land Size	888m <sup>2</sup>

**Extras**  
Sunroom

