



**Cynthia Arkeldien**  
0734547913  
cynthia.arkeldien@homeandhectare.com

Contact Home and Hectare  
Eastern Cape

041 5811744

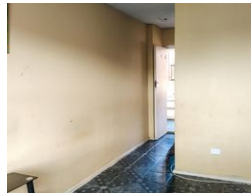
43B - 6th Avenue  
Walmer  
Port Elizabeth  
6070

SOLD



SOLE MANDATE

Web Ref RL5718



**R300,000**

1 1

**Monthly Bond Repayment** R3,096.57  
Calculated over 20 years at 11% with no deposit.

**Transfer Costs** R15,517.00    **Bond Costs** R10,985.00

These calculations are only a guide. Please ask your conveyancer for exact calculations.

**Monthly Levy** R640

### Investment or Living opportunity

This one-bedroom apartment is a prime investment or living opportunity, especially ideal for young professionals or first-time buyers.

The layout features a welcoming living area and a cozy kitchen with cupboard space and extra closet for ample storage. The bathroom completes the interior, blending comfort with practicality. Set within a quiet, secure complex, this apartment offers both serenity and prime accessibility.

Strategically located near major employers like Aspen, Coca-Cola, and Mondelez, and with seamless access to the N2, this property is also tenant-occupied, ensuring immediate rental income for the next investor. Priced to sell quickly, it's a smart investment choice in a high-demand location. Don't miss out on this incredible opportunity!

Every effort has been made to make sure the content of this...

### Features

**Interior**

Bedrooms 1  
Bathrooms 1  
Recep. Rooms 1

**Exterior**

Carports / Parkings 1  
Pool No

**Sizes**

Floor Size 40m<sup>2</sup>

