



**Zim Mlele**  
0795041024  
zim.mlele@homeandhectare.com

Contact Home and Hectare  
Eastern Cape

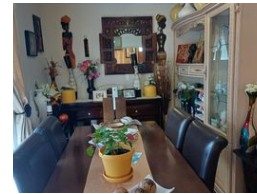
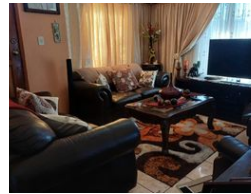
041 5811744

43B - 6th Avenue  
Walmer  
Port Elizabeth  
6070



SOLE MANDATE

Web Ref RL5448



**R849,000**

**Monthly Bond Repayment** R8,763.28  
Calculated over 20 years at 11% with no deposit.

**Transfer Costs** R28,244.00    **Bond Costs** R21,450.00  
These calculations are only a guide. Please ask your conveyancer for exact calculations.

3    2    1

### Perfect Family Home in Kwadwesi - Ideal for Newlyweds!

Discover this charming family home in Kwadwesi, featuring a lovely garden and an automated main gate. It's the perfect haven for newlyweds!

Key Features:

Three Bedrooms: Enjoy spacious rooms with elegant laminated floors.  
Two Bathrooms: Includes a convenient en-suite.  
Living Spaces: Relax in the tiled lounge and dining room.  
Fully Fitted Kitchen: Ready for all your culinary adventures.  
Single Garage: Safe and secure parking.  
Bonus Features:

Self-contained flat  
Jojo tank  
Paved areas  
Burglar bars on all doors for added security

Convenient Location:

### Features

Pets Allowed		Exterior		Sizes	
Yes		Garages	1	Land Size	421m <sup>2</sup>
Interior		Pool	No		
Bedrooms	3				
Bathrooms	2				
Kitchens	1				
Recep. Rooms	2				

