

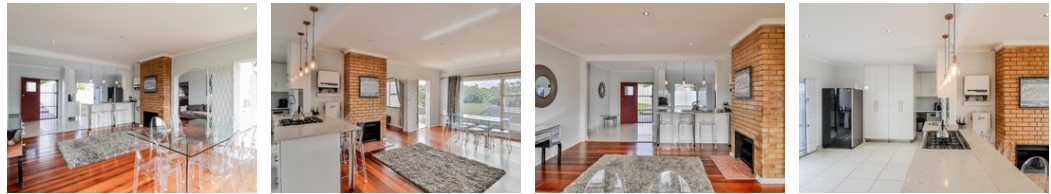
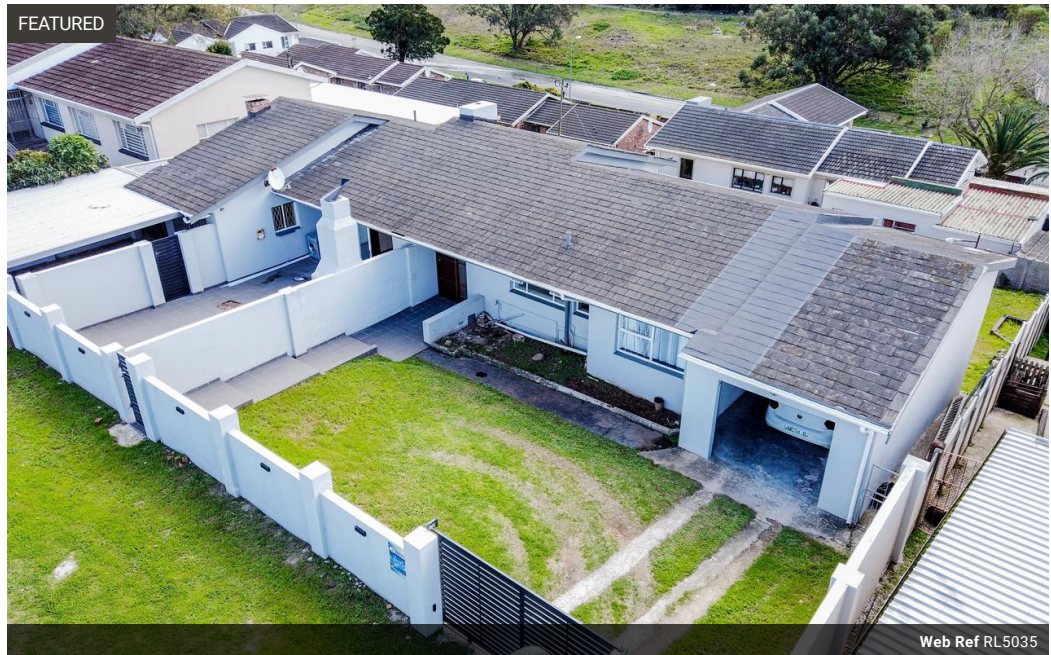


Ronell Human
0833672173
ronell.human@bkb.co.za

Contact Home and Hectare
Eastern Cape

041 5811744

43B - 6th Avenue
Walmer
Port Elizabeth
6070



R1,600,000

🛏️ 3 🚿 2.5 🚗 2

Monthly Bond Repayment R16,515.01
Calculated over 20 years at 11% with no deposit.

Transfer Costs R48,785.00 **Bond Costs** R28,990.00
These calculations are only a guide. Please ask your conveyancer for exact calculations.

Monthly Rates R1,091

Perfect start up home

This delightful home is the perfect start up for a young family.

The house boasts an open-plan living area that seamlessly combines the kitchen, dining and lounge spaces. This layout maximizes space and creates a welcoming environment for entertaining and spending quality time with loved ones. The modern Caesar-topped kitchen is equipped with scullery and dishwashing/ laundry area.

The kitchen area with stack doors have access to the outside private braai area. The lounge/ dining has a cozy fireplace and leads to the back yard area with a pool consisting of water fixtures and braai area. The house also consists of an inside entertainment area equipped with indoor braai.

There is three well sized bedrooms with built-in cupboards. The main bedroom comes fitted with air conditioning.

No need to worry about parking...

Features

Pets Allowed	Yes			
Interior		Exterior		Sizes
Bedrooms	3	Garages	2	Land Size
Bathrooms	2.5	Carports / Parkings	2	850m ²
Kitchens	1	Security	Yes	
Recep. Rooms	2	Pool	Yes	
Furnished	No			

