



Zim Mlele
0795041024
zim.mlele@homeandhectare.com

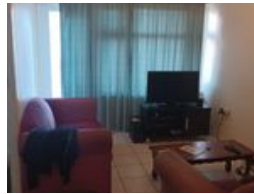
Contact Home and Hectare
Eastern Cape

041 5811744

43B - 6th Avenue
Walmer
Port Elizabeth
6070



Web Ref RL2965



R225,000

1 1

Monthly Bond Repayment R2,322.42
Calculated over 20 years at 11% with no deposit.

Transfer Costs R13,821.00 **Bond Costs** R9,510.00
These calculations are only a guide. Please ask your conveyancer for exact calculations.

Monthly Levy R931.2 **Monthly Rates** R239.4

Lovely one Bedroom apartment.

Calling all investors! We have an apartment available in the sought after Sorrento situated in Central, Western Road at a price to go.

Offering a lounge, kitchen, one bedroom and bathroom.

Being close to great shops, bars and restaurants this could be a great investment.

Big bonus- there is no transfer duties on the flat payable.

Features

Interior		Exterior		Sizes	
Bedrooms	1	Carports / Parkings	1	Floor Size	45m ²
Bathrooms	1	Pool	No		
Kitchens	1				
Recep. Rooms	1				

