

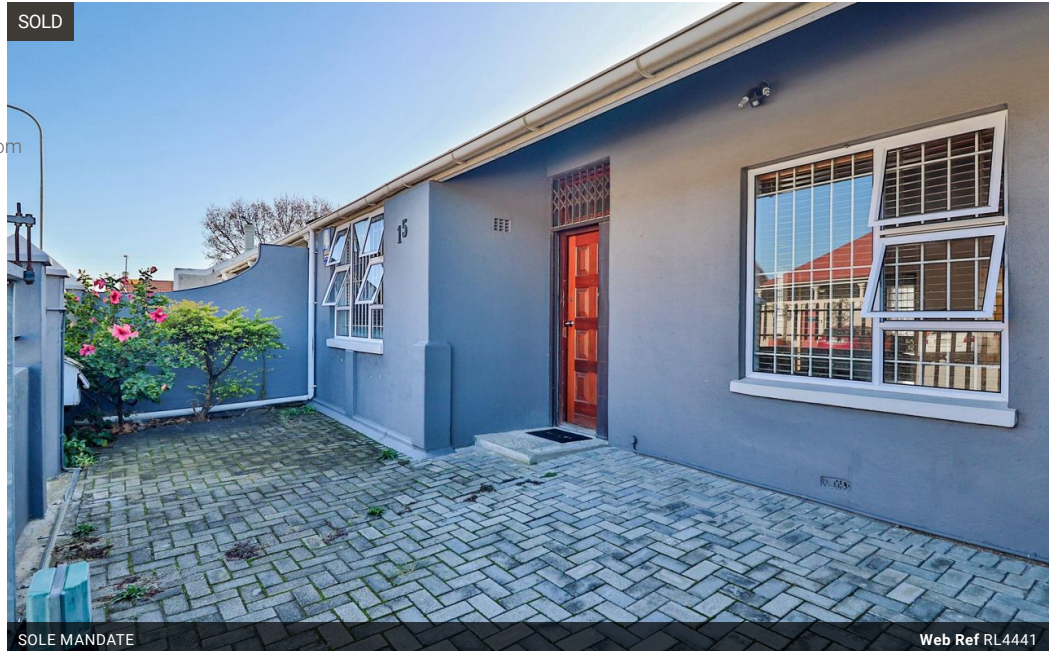


Cynthia Arkeldien
0734547913
cynthia.arkeldien@homeandhectare.com

Contact Home and Hectare
Eastern Cape

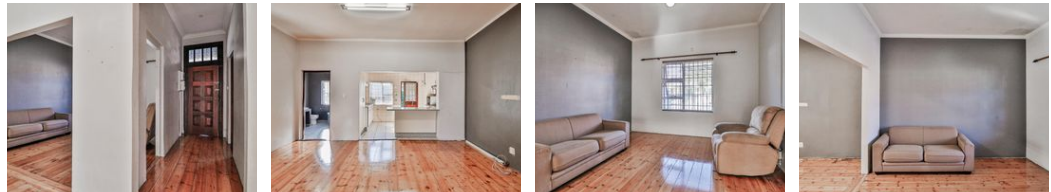
041 5811744

43B - 6th Avenue
Walmer
Port Elizabeth
6070



SOLE MANDATE

Web Ref RL4441



R799,000

Monthly Bond Repayment R8,247.19
Calculated over 20 years at 11% with no deposit.

Transfer Costs R25,898.00 **Bond Costs** R19,565.00
These calculations are only a guide. Please ask your conveyancer for exact calculations.

Monthly Rates R881

2 1.5

Richmond Hill: Prime Investment & Effortless Living in a Sought-After Location!

Just a short walk from vibrant Stanley Street, this charming home combines comfort, opportunity, and prime positioning. The open-plan lounge seamlessly flows into a lovely kitchen, equipped with ample built-in cupboards, a Kelvinator stove, laundry plumbing, and space for a fridge.

With two bedrooms featuring original wooden floors and built-in cupboards, along with a bathroom complete with a corner bath and walk-in shower, this home offers a blend of elegance and functionality.

Step outside to a spacious backyard, perfect for children and pets to play freely. The undercover braai area is ideal for entertaining and includes an extra room with an outside toilet, adding convenience and flexibility. Secure parking is available behind locked gates, providing peace of mind.

For investors, a reliable tenant is already in...

Features

Pets Allowed	Yes				
Interior		Exterior		Sizes	
Bedrooms	2	Carports / Parkings	4	Floor Size	117m ²
Bathrooms	1.5	Pool	No	Land Size	272m ²
Kitchens	1				
Recep. Rooms	2				
Extras					
Security Alarm System					

