



Gail Botha
0823377454
gail.botha@homeandhectare.com

Contact Home and Hectare
Eastern Cape

041 5811744

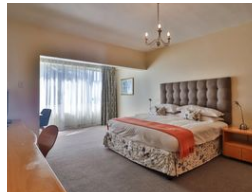
43B - 6th Avenue
Walmer
Port Elizabeth
6070

3 Bedroom Duplex For Sale in Summerstrand



SOLE MANDATE

Web Ref RL5715



R1,900,000

3 Bedrooms 1 Bathroom 1 Garage

Monthly Bond Repayment R19,611.58

Calculated over 20 years at 11% with no deposit.

Transfer Costs R69,206.00 **Bond Costs** R32,760.00

These calculations are only a guide. Please ask your conveyancer for exact calculations.

Monthly Levy R2,290

Fully Furnished Beachfront Duplex in Little Bandle

What a great discovery, FULLY FURNISHED with a GARAGE!!!

This duplex apartment in the desirable Little Bandle complex is now looking for a new owner. Whether you want a lock-up-and-go or ready-to-go INVESTMENT property - this one offers you both.

Located right on the beachfront. It offers comfort and convenience as a beachside apartment.

The downstairs area features an open-plan lounge and dining room. The kitchen leads out to a small private courtyard, offering easy access to the garage.

Upstairs, you'll find three oversized, fully carpeted bedrooms, each fitted with built-in cupboards. The full bathroom on this level is spacious and conveniently located to serve all three bedrooms.

This duplex offers easy coastal living with modern amenities and comes fully furnished, allowing you to move in or rent out...

Features

Interior		Exterior		Sizes	
Bedrooms	3	Garages	1	Floor Size	126m ²
Bathrooms	1	Carports / Parkings	1	Land Size	8,375m ²
Kitchens	1.5	Security	Yes		
Recep. Rooms	2	Dom. Accom.	0.5		
Furnished	Yes	Pool	No		
		Views	No		

Extras

Built-in Kitchen Appliances Built-in Wardrobes Private Garden Available Furnished Fridge Open Plan

