



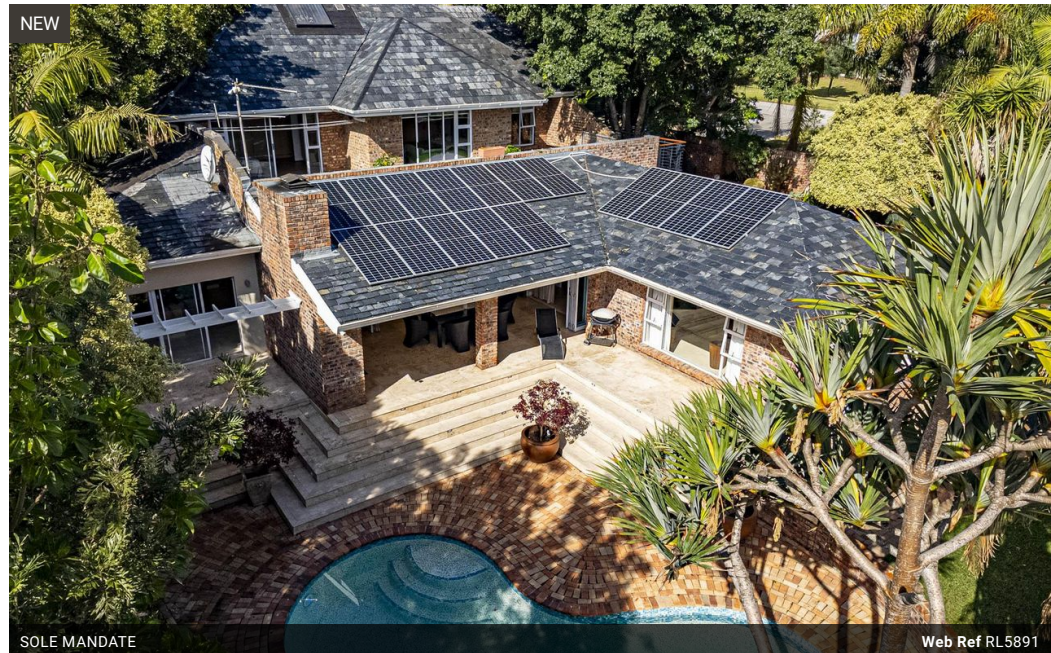
Gail Botha
0823377454
gail.botha@homeandhectare.com

Contact Home and Hectare
Eastern Cape

041 5811744

43B - 6th Avenue
Walmer
Port Elizabeth
6070

5 Bedroom House For Sale in Walmer



R6,000,000

🛏 5 🚿 3.5 🚗 4

Monthly Bond Repayment R61,931.30
Calculated over 20 years at 11% with no deposit.

Transfer Costs R517,807.00 **Bond Costs** R65,785.00
These calculations are only a guide. Please ask your conveyancer for exact calculations.

Monthly Rates R3,507

Elegant Family Home in Walmer

The video is very special to watch!

Situated in the sought-after suburb of Walmer, right next to a prestigious golf estate, this beautifully designed double-storey home offers luxury, comfort, and lifestyle. With direct access to nearby mountain bike single tracks, it's a haven for outdoor enthusiasts-ideal for runners, walkers, and dog lovers alike.

The home boasts gleaming marble tiles throughout the downstairs area, leading to a show-stopping staircase crowned with a beautiful chandelier. The ground floor features a study, a guest bathroom, and a versatile fourth bedroom or pajama lounge.

The open-plan kitchen, dining area, and formal lounge-with a cozy gas fireplace-connects well into a second informal lounge or "cinema" room. All living areas open onto a spacious patio finished with travertine tiles, perfect for...

Features

Pets Allowed Yes

Interior
Bedrooms 5
Bathrooms 3.5
Kitchens 1
Recep. Rooms 3
Studies 1
Furnished No

Exterior
Garages 4
Carports / Parkings 2
Security Yes
Dom. Accom. 1
Pool Yes
Views Yes

Sizes
Floor Size 494m²
Land Size 1,571m²

Extras

Centre Island Fireplace Intercom Laminated Floors Open Plan Special Doors Water Tanks
Security Study Available Networked Air Conditioner Borehole Gas Hob Granite Solar Heating

