

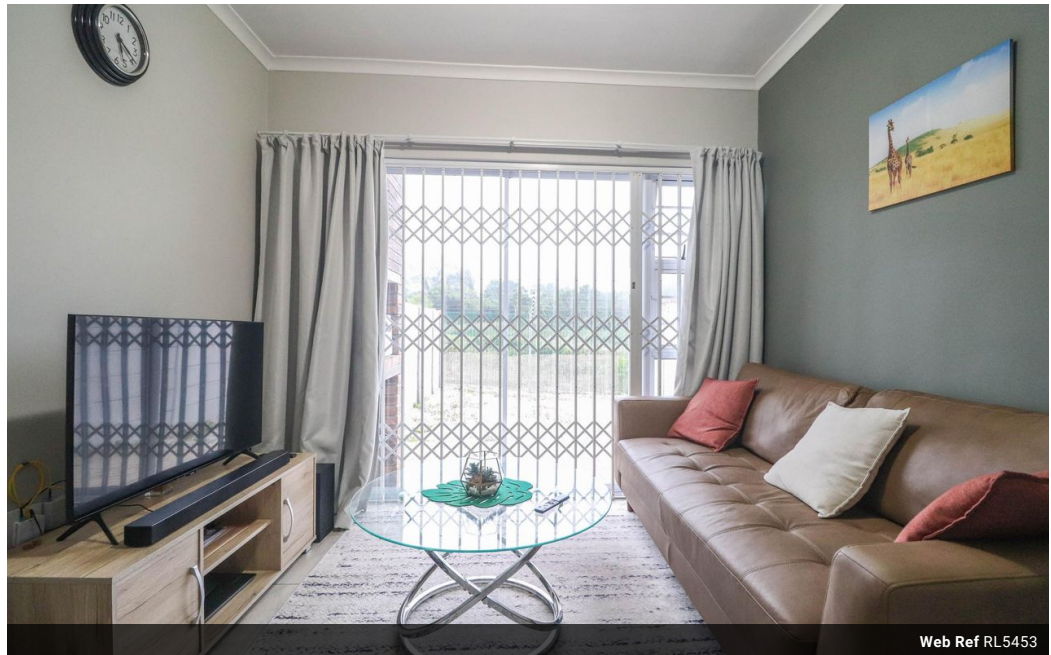


Wendy Baker
0837616170
wendy.baker@homeandhectare.com

Contact Home and Hectare
Eastern Cape

041 5811744

43B - 6th Avenue
Walmer
Port Elizabeth
6070



Web Ref RL5453



R790,000



Monthly Bond Repayment R8,154.29
Calculated over 20 years at 11% with no deposit.

Transfer Costs R25,898.00 **Bond Costs** R19,565.00

These calculations are only a guide. Please ask your conveyancer for exact calculations.

Monthly Levy R411.8

Westring 1-Bedroom apartment

Step into relaxation and luxury with this beautiful one-bedroom apartment nestled in the heart of Westring.

Perfect for a single professional or couple, set within a modern housing development, along with peace and tranquillity this ground floor property offers the following:

- 1 bedroom with built-in cupboards
- 1 bathroom
- open-plan kitchen with granite tops and gas stove
- paved patio, with built-in braai and enclosed garden
- single carport
- treli gates on both exit doors

Prepaid electricity meter, solar geyser and water metered per unit.

Living in Westring means you're just a stone's throw away from Cape Road and public transportation, making it easy to access shops, restaurants, and entertainment venues. This modern gem offers the ultimate blend of comfort and convenience.

*** Every effort has

Features

Interior		Exterior		Sizes	
Bedrooms	1	Carports / Parkings	1	Floor Size	33m ²
Bathrooms	1	Pool	Yes	Land Size	24,795m ²
Kitchens	1				
Recep. Rooms	1				

