



Gail Botha
0823377454
gail.botha@homeandhectare.com



Renier Zietsman
0824915182

renier.zietsman@bkb.co.za

Contact Home and Hectare
Eastern Cape

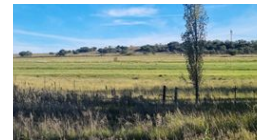
041 5811744

43B - 6th Avenue
Walmer
Port Elizabeth
6070



SOLE MANDATE

Web Ref RL5169



R20,000,000

Monthly Bond Repayment R206,437.68
Calculated over 20 years at 11% with no deposit.

Transfer Costs R2,272,371.00 **Bond Costs** R132,285.00
These calculations are only a guide. Please ask your conveyancer for exact calculations.

4 1 2

Queenstown Farm - A Pristine Agricultural Opportunity

This fully operational farm is located between Whittlesea and Queenstown, ideal for livestock and crop production. Spanning 574.7 hectares, this farm is a prime investment for cattle, sheep, and crop farming.

Farm Features
Size: 574.7 hectares

- WATER:**
- Average rainfall of 450mm annually
 - 51.9ha schedule water rights
 - 3x center pivots for efficient irrigation
 - 22ha established Lucerne and 13ha newly planted Teff
 - 37ha under floppy and drag line irrigation
 - 22ha of flood irrigation (currently unused but in excellent condition)
 - 1x borehole supplying water to the main house

- ENERGY:**
- 3x center pivots controlled by Variable Speed Drive (VSD) for optimized energy use
 - 2x Eskom electricity points on the property

Features

Pets Allowed	Yes		
Interior		Exterior	
Bedrooms	4	Garages	2
Bathrooms	1	Carports / Parkings	2
Kitchens	1	Security	Yes
Recep. Rooms	2	Dom. Accom.	6
Furnished	No	Pool	Yes

