



**John Suntele**  
0728312588  
john.suntele@homeandhectare.com

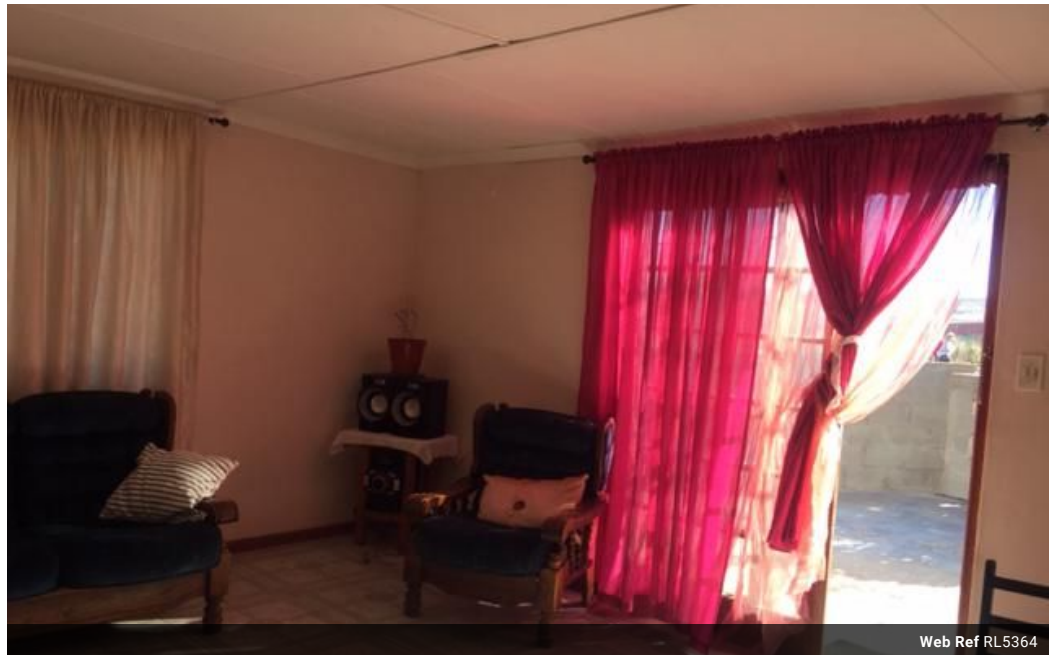


**Rochell Suntele**  
0728312588  
rochell.suntele@homeandhectare.com

Contact Home and Hectare  
Western Cape

041 581 1744

43b 6th Avenue  
Walmer  
Port Elizabeth



Web Ref RL5364



**R495,000**

**Monthly Bond Repayment** R5,109.33  
Calculated over 20 years at 11% with no deposit.

**Transfer Costs** R19,049.00    **Bond Costs** R13,910.00  
These calculations are only a guide. Please ask your conveyancer for exact calculations.

3    1

**RARE FIND IN DIAZVILLE SALDANHA**

This hidden gem is situated in a well- established area in Diazville Saldanha. You will be surprised when entering the house..... a spacious living room greets you, enough space to divide it for a dining area as well!  
The kitchen and living/ dining area is connected with a serving window, whilst the kitchen is partially fitted, but also very spacious. It further consists of 3 neat bedrooms and full bathroom.  
The property is fully enclosed, gated, neat with a carport and a tool shack.  
A small garden compliments this low maintenance property.  
It is near the schools and in walking distance to the taxi route and Tabakbaai Holiday Resort.  
Call now to arrange for a viewing!

**Features**

<b>Pets Allowed</b>	Yes		
<b>Interior</b>		<b>Exterior</b>	<b>Sizes</b>
Bedrooms	3	Carports / Parkings	1
Bathrooms	1	Security	Yes
Kitchens	1	Pool	No
Recep. Rooms	1	Views	No
Furnished	No		Land Size
			270m <sup>2</sup>

