



John Suntele
0728312588
john.suntele@homeandhectare.com



Rochell Suntele
0728312588
rochell.suntele@homeandhectare.com

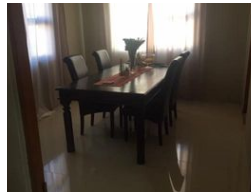
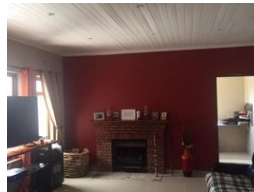
Contact Home and Hectare
Western Cape

041 581 1744

43b 6th Avenue
Walmer
Port Elizabeth



Web Ref RL5435



R1,890,000

Monthly Bond Repayment R19,508.36
Calculated over 20 years at 11% with no deposit.

Transfer Costs R68,606.00 **Bond Costs** R32,760.00

These calculations are only a guide. Please ask your conveyancer for exact calculations.

4 1.5 4

CHARMING FAMILY HOME

This property is nestled in the well- established area of Parkers Dorp, Saldanha. This is old meets new, newly renovated (partially) property offers tremendous opportunities! With 4 bedrooms, study or office space, full family bathroom, en-suite in the main bedroom, spacious fitted kitchen with scullery and laundry area, dining room, living room, sun room, outside braai room it offers guest house potential. Lots of built-in cupboards throughout the house, tiled and sunny rooms. The charming fireplace in the living room provides cozy winter tranquility, while the Sunroom is there to relish leisurely afternoons. A separate entrance single room with en-suite offers extra rental income. The double volume garages with big store room can be converted into flats - plans included. The size of the land is big, a pool can be built...

Features

Pets Allowed		Yes			
Interior		Exterior		Sizes	
Bedrooms	4	Garages	4	Land Size	1,088m ²
Bathrooms	1.5	Carports / Parkings	5		
Kitchens	1	Security	Yes		
Recep. Rooms	2	Pool	No		
Studies	1	Views	No		
Furnished	No				

Extras

Built-in Wardrobes Covered Parking Pets Allowed Study Walk-in Closet Barbecue Area Pantry Fireplace Hob Laundry Tiled Floors Under Counter Oven Washing Machine Connection Wood Cei

