



Andries Radley
0794931144
andries.radley@homeandhectare.com

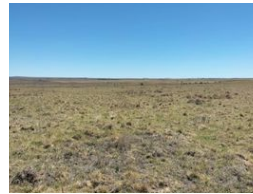
Contact Home and Hectare Free State

060 5004605

Shop 26 Pretty Gardens
Langenhoven Park
Bloemfontein



Web Ref RL5711



R22,260,000

Monthly Bond Repayment R229,765.14
Calculated over 20 years at 11% with no deposit.

Transfer Costs R2,566,171.00 **Bond Costs** R132,285.00
These calculations are only a guide. Please ask your conveyancer for exact calculations.

 0  0

Mixed farms in Senekal

This farming units of 1 709 hectares are available in Senekal in the Eastern Free State.

In total there is 779 hectare (46%) medium potential arable land and 930 hectare (54%) of sweet veld. Grains produced in this area include maize, soybeans and sunflower. Livestock farming includes cattle and sheep operations to optimize farming income.

The average annual rainfall is 550-600mm.

The average yield for different grains is:

Maize - 3.5 Ton/ha
Soybeans - 1.5 Ton/ha
Sunflower - 1.3 Ton/ha

The carrying capacity is 4-5 hectares per LSU.

The 1 709 hectares are managed in four different blocks that is well developed and divided in camps with water supplied from boreholes, cement dams, earth dams, the Sand River and streams flowing into the Sand River.

The four management units are separately in the market as well

Features

Pets Allowed	Yes		
Exterior		Sizes	
Pool	No	Land Size	1,709Ha

