

Lydia van Rensburg
083 553 9921
lydia.vanrensburg@homeandhectare.com

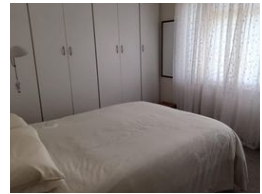
Contact Home and Hectare
Western Cape

041 581 1744

43b 6th Avenue
Walmer
Port Elizabeth



Web Ref RL5754



R3,200,000

Monthly Bond Repayment R33,030.03
Calculated over 20 years at 11% with no deposit.

Transfer Costs R184,379.00 **Bond Costs** R44,070.00
These calculations are only a guide. Please ask your conveyancer for exact calculations.

4 4 1.5

Still Bay West: SPACIOUS FAMILY HOME WITH EXCELLENT LOCATION

Spacious, solid family home in established and peaceful area in the sought-after town of Still Bay.

The property offers rental potential with one or two sections that can be closed off and can be rented out separately.

- The property offers:
- 4 Bedrooms
 - 4 Bathrooms (1 en-suite)
 - 3 Kitchens - two with breakfast nooks
 - 3 Lounges
 - Dining room / study
 - Spacious braai room with beautiful sea views.
 - 1,5 Garage with electric door.
 - Laundry area in the garage.
 - Carport
 - 2 Outside braai areas.

Sound investment in this safe and popular coastal town in the Southern Cape - once in a lifetime opportunity!

All these can be yours at a special price of R3.2 million

Features

Pets Allowed		Yes			
Interior					
Bedrooms	4	Exterior		Sizes	
Bathrooms	4	Garages	1.5	Land Size	729m ²
Kitchens	3	Carports / Parkings	1		
Recep. Rooms	4	Pool	No		

