



**Wendy Baker**  
0837616170  
wendy.baker@homeandhectare.com

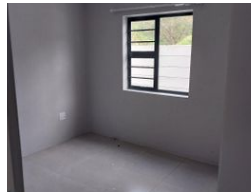


**Benita Snyman**  
084 548 3941  
benita.snyman@homeandhectare.com

Contact Home and Hectare  
Eastern Cape

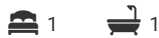
041 5811744

43B - 6th Avenue  
Walmer  
Port Elizabeth  
6070



**R5,800 pm**

**Lease Period** 12 months    **Availability** Immediately    **Deposit** -  
**Annual Escalation** -



1 Bedroom second floor apartment - Overbaakens

If you're looking for a space to unwind after a busy day, then look no further! This modern, newly finished apartment is the ideal starter home for a professional single or couple. This ground floor property offers the following:

- 1 Bedroom with built-in cupboards
- 1 Bathroom
- Open-plan kitchen and living room
- Single parking bay
- Apartment is 35 square meters
- Enclosed patio with built in braai

\*\*\* Prepaid electricity meter and water for tenants' account \*\*\*

With it's close proximity to William Moffett the location of this increasindly popular suburb means you're never far from maior

Features

Interior		Exterior		Sizes	
Bedrooms	1	Carports / Parkings	1	Floor Size	35m <sup>2</sup>
Bathrooms	1	Pool	No		
Kitchens	1				
Recep. Rooms	1				

